



Restarting the Conversation

Moderators & participating panelists



Michael Thompson
President & CEO
National Alliance of Healthcare
Purchaser Coalitions



Jessica Brooks
President & CEO
Pittsburgh Business Group on Health



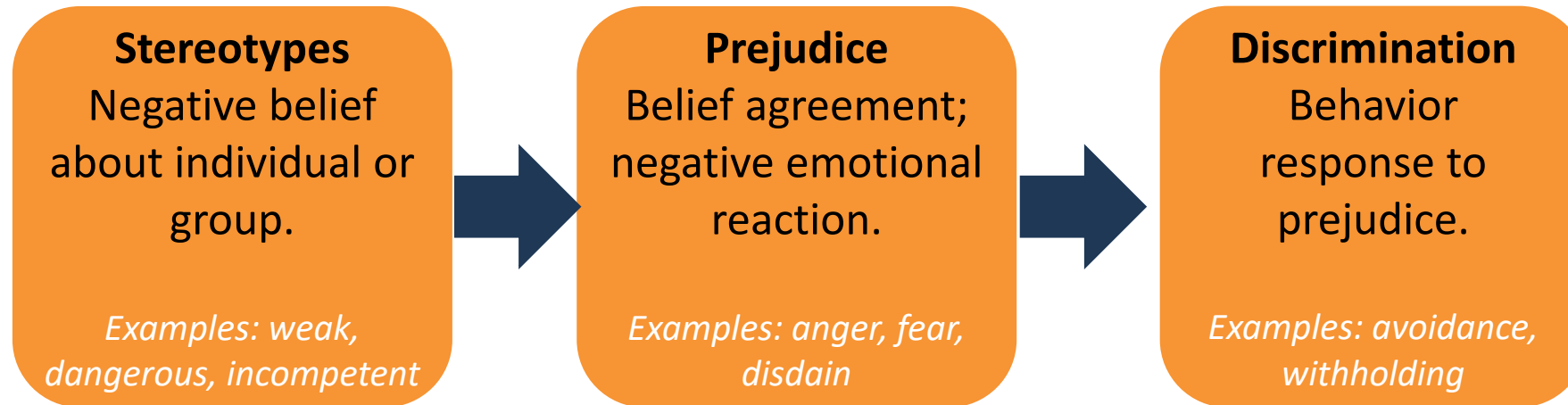
Panelists

- Marissa Alert
Johns Hopkins Healthcare Solutions
- Curtis Cannon
Axis Recovery
- Marsha Greene-Jones
City of Philadelphia
- Sheila Hamilton
Author and Journalist
- Ugo Okpewho, FSA, MAAA
BDO USA, LLP
- Ryan Patrick Parker
The Parker Group, LLC
- Amit Sood, MD, MS, FACP
Global Center for Resiliency & Wellbeing
- Alan Weil
Health Affairs

Race in the Context of Stigma

stig·ma /'stigmə/

a mark of disgrace associated with a particular circumstance, quality, or person.



Examples of Health-Related Stigma

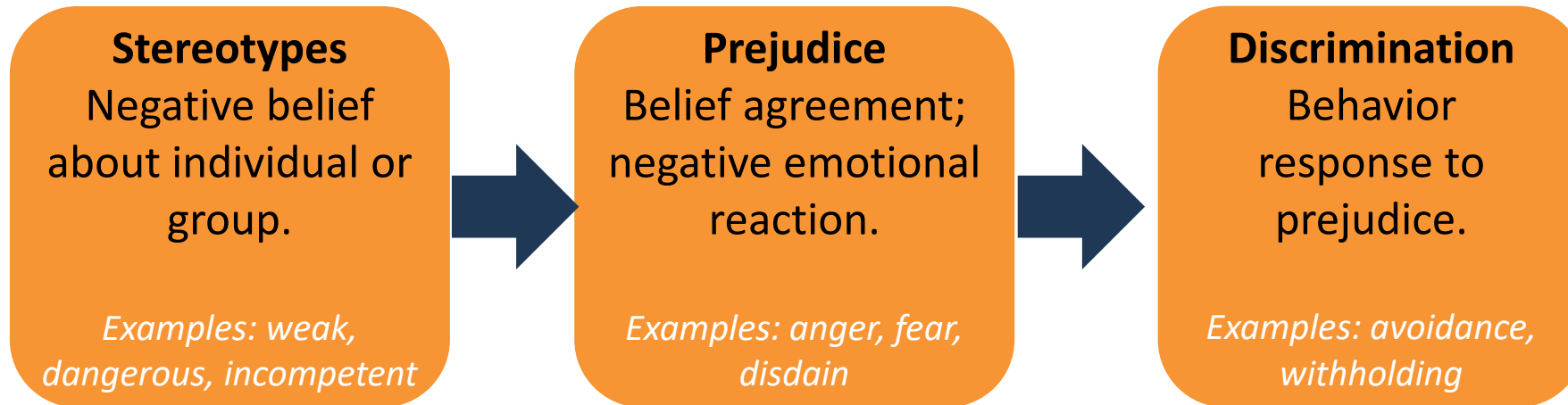
Physical disabilities and deformities
Skin conditions (e.g., leprosy)
HIV/AIDS
Cancer
COVID-19
Mental illness
Substance abuse
Overweight and obesity

Citations: <https://www.ncbi.nlm.nih.gov/pmc/articles/PMC1489832/>
<https://www.mayoclinic.org/diseases-conditions/mental-illness/in-depth/mental-health/art-20046477>
<https://bmcmmedicine.biomedcentral.com/articles/10.1186/s12916-019-1271-3>

Race in the Context of Stigma

stig·ma /'stigmə/

a mark of disgrace associated with a particular circumstance, quality, or person.

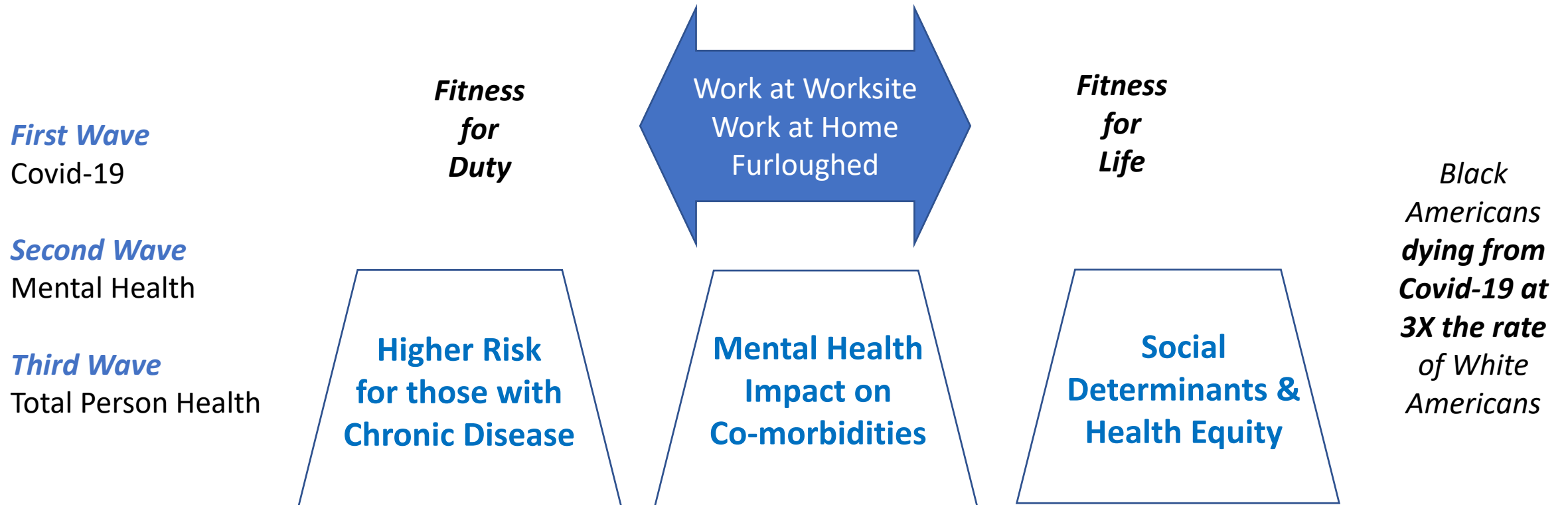


Negative Effects of Stigma

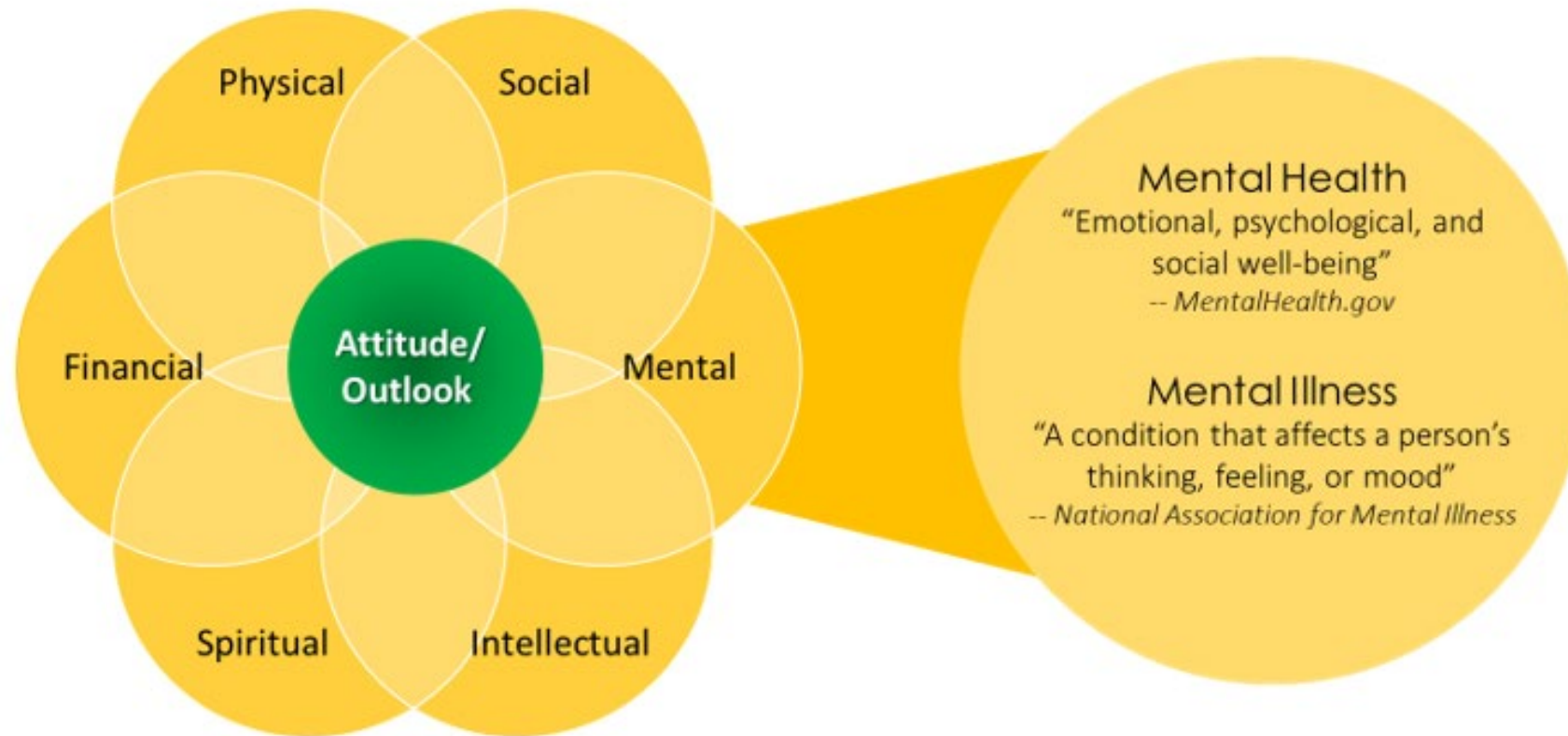
- Self-doubt and shame
- Isolation and secrecy
- Reluctance to seek help
- Restricted career or life opportunities
- Inadequate resources or coverage
- Bullying, physical violence, harassment

Citations: <https://www.ncbi.nlm.nih.gov/pmc/articles/PMC1489832/>
<https://www.mayoclinic.org/diseases-conditions/mental-illness/in-depth/mental-health/art-20046477>
<https://bmcmmedicine.biomedcentral.com/articles/10.1186/s12916-019-1271-3>

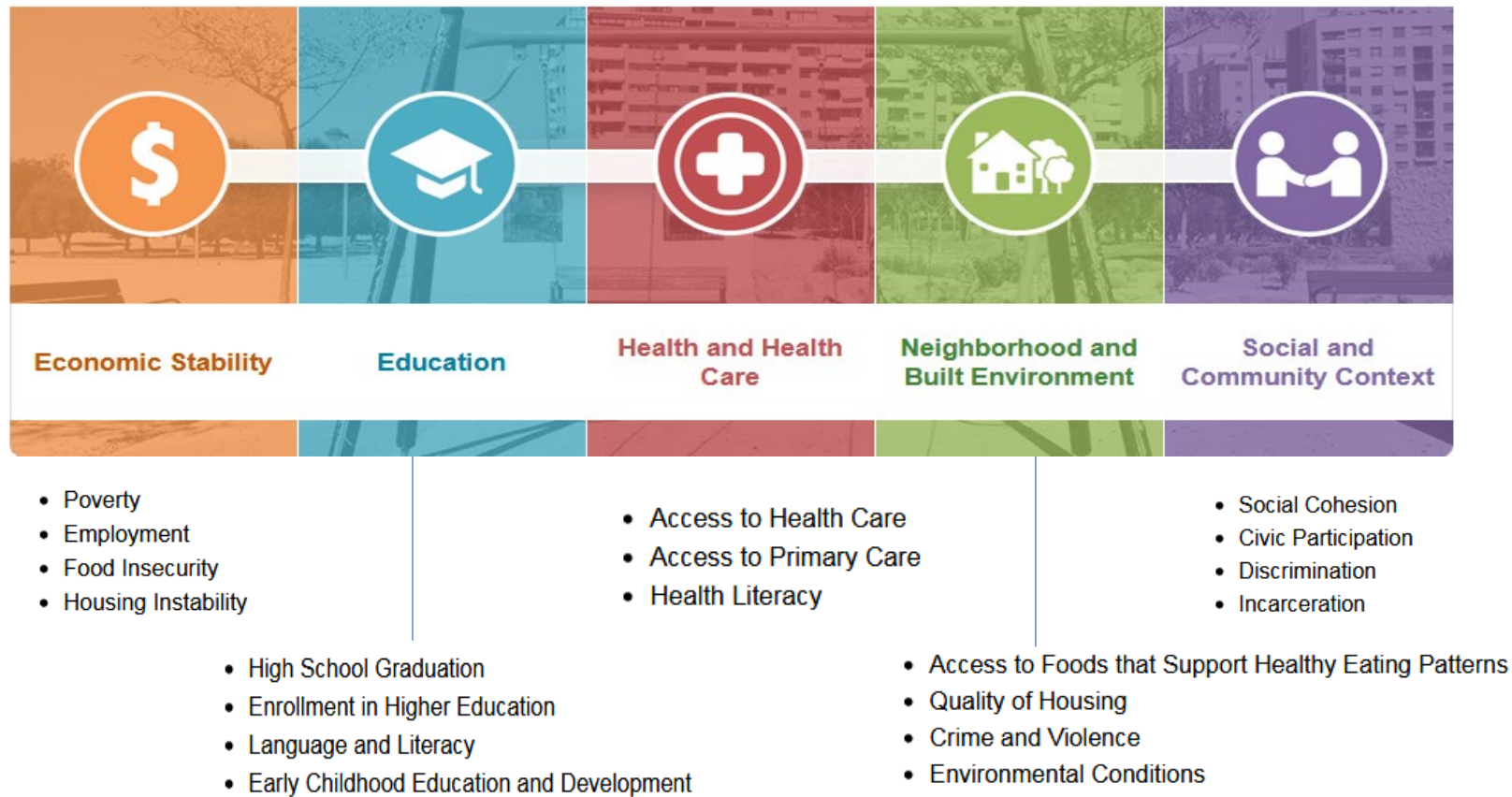
The Covid-19 Era – Accentuating Forces related Race, Health & Equity



Race, Health & Wellbeing



Race & Social Determinants of Health



<https://www.healthypeople.gov/2020/topics-objectives/topic/social-determinants-health/interventions-resources>

Race and Value-Based Total Person Care

On Integrative Medicine

Integrative medicine seeks to *restore and maintain health and wellness across a person's lifespan by understanding the patient's unique set of circumstances*

Adam Pearlman, MD, PhD

On Social Determinants

Effective care for most illness requires understanding the social conditions of one's patients. These "causes of the causes" are largely social and environmental ones.

Rishi Manchanda, MD, MPH

On Outcomes

"The transformation to a value mindset begins with the simple observation that patients and families seek health, not more treatment. ... They endure treatment in pursuit of regained capabilities, comfort and calm."

Scott Wallace, JD, MBA



The Value Agenda

- Transparency
- Affordability
- Quality & Safety
- Waste
- Advanced Primary Care
- Episodes of Care

Open Panel Discussion



Marissa Alert
Johns Hopkins
Health Solutions



Curtis Cannon
Axis Recovery



Marsha Greene-Jones
City of Philadelphia



Sheila Hamilton
Journalist, Author



Ugo Okpewho
BDO USA, LLP



Ryan Patrick Parker
The Parker Group, LLC



Amit Sood, MD
Global Center for
Resiliency & Wellbeing



Alan Weil
Health Affairs

How are We Getting Started?

Race, Health & Equity

We are just getting started

This is a journey

This is important

We are in this together

*There is no end game but we
will make a difference*

Leadership Group Starting to Form

- Within National Alliance
- Others

Race Health & Equity Town Halls

- Four town halls scheduled between now and Labor Day
- 6/25, 7/16, 8/6, 8/27 @5pm ET
- Topics & panelists TBD
- Mike and Jessica will co-host all of these Town Halls

Ties into multiple existing efforts & collaborations

- Community Health
- Sharecare Relationship
- Industry Collaborations (WIN, HERO, BGH, WELCOA, Wellbeing Collaborative, others)
- Philanthropy
- CDC
- The Path Forward for MHSU & Mental Health Index

Moving through Potential Traps

Thinking “We’ve got the answers”

- There are things we all are learning – things embedded in this culture that we are stumbling on – how do we help each other to move through this?
- Need to ask questions first – not step back, but lean in
- Need to be intentional with the intention to take action

Thinking “I don’t know if we are collectively ready for this”

- We are ready for this – the environment has changed in a way we have never experienced before
- Uncomfortable conversations are becoming the norm – politically correct is passé
- We are the leaders that can make a difference
- Let’s be prepared to have uncomfortable dialogue

We all have a responsibility to stay active, stay engaged, continue to learn and be transparent on what we are committed to.

Need to focus on sustainable solutions

It’s not enough to acknowledge the issue, we need to take action

We MUST change our views and our words – because going back is not an option

Potential Approach to Support Coalitions & Their Members

Understand Issues & Needs

- Common definitions
- Metrics and benchmarks
- Customized employer assessment

Connect To Resources

- Facilitate relationships
- Connect to national networks
- Integrate regional initiatives

Invest To Improve

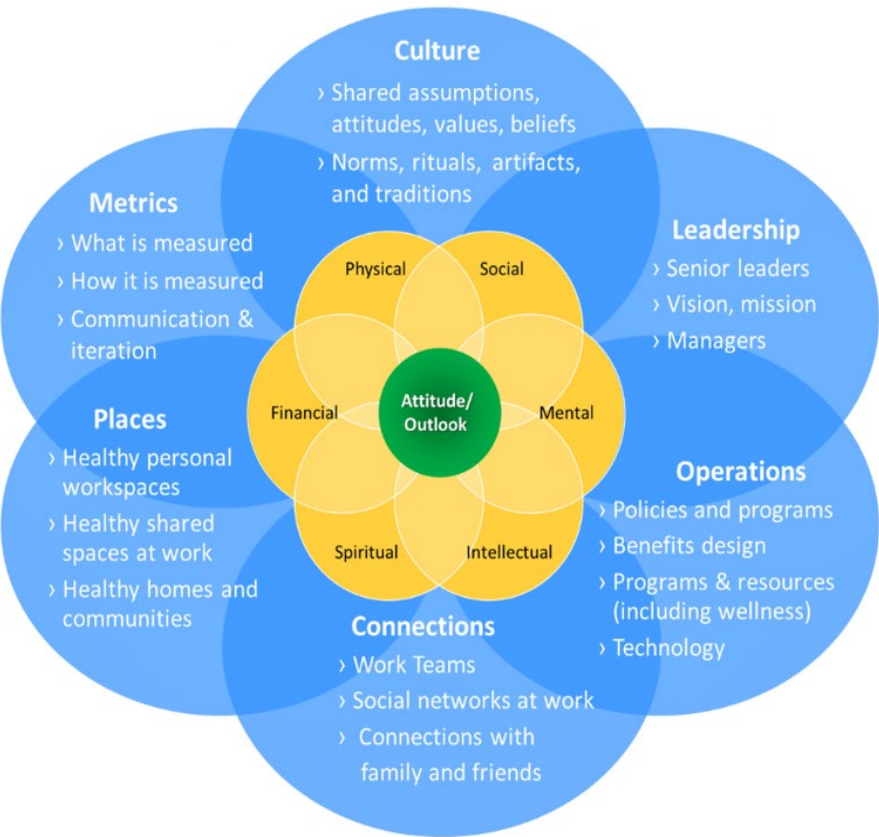
- Leverage regional initiatives
- Convene & share
- Potential RESET initiatives

*Our
People*

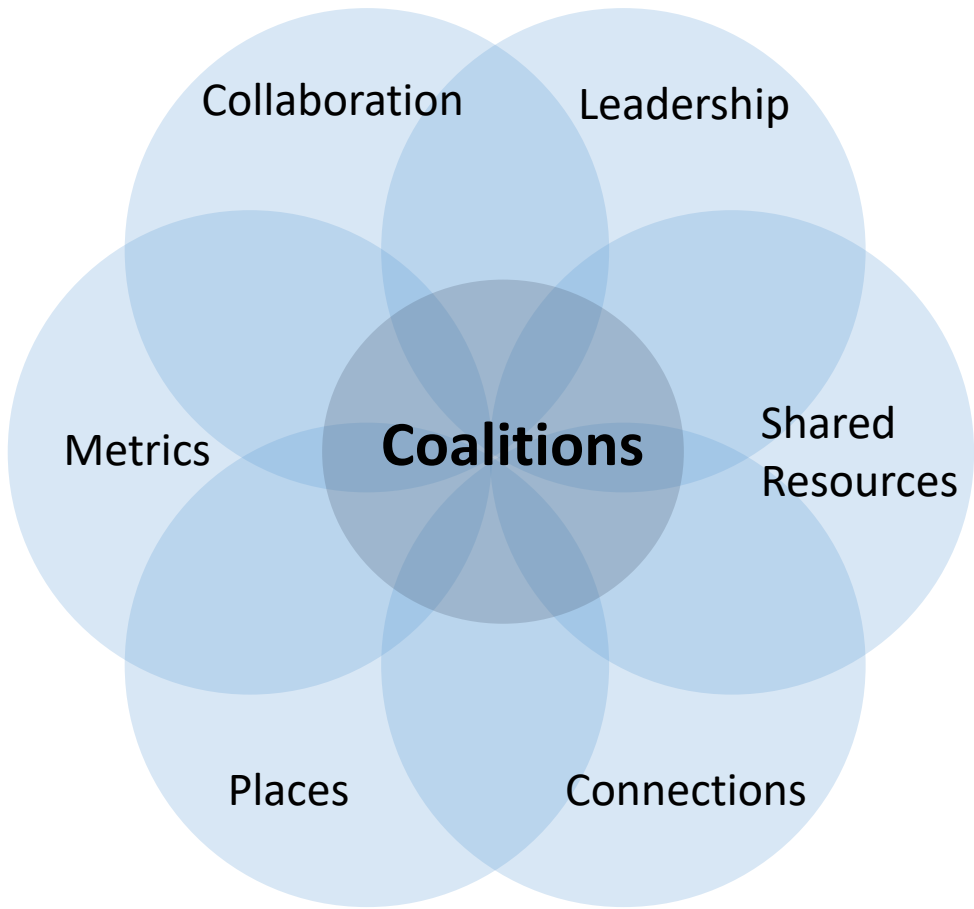
*Our
Places*

Potential Role of Coalitions in Race, Health & Equity

Levers within Organizations



Levers Across Community



The levers are parallel when moving into Community
❑ *Need for Selectivity & Financing*



RACE, HEALTH & EQUITY

Next Employer Town Hall

July 16, 2020 | 5:00 PM ET



RACE, HEALTH & EQUITY

Relevant Articles & Toolkits



Helping Employers To Support Employees Where They Live, Work And Play During The COVID-19 Era



Employer Town Hall: Social Determinants In The Face Of COVID-19

The Washington Post

The Pandemic's Mental Health Impact Is Dangerous For New Moms. Especially Black Moms.

The Washington Post

To My White Friends, The Time For Talk Has Passed. Now Is The Time For Work.



Talking About Race

Healing in Action:



Healing In Action: A Toolkit For Black Lives Matter Healing Justice & Direct Action



National Alliance
of Healthcare Purchaser Coalitions
Driving Innovation, Health and Value